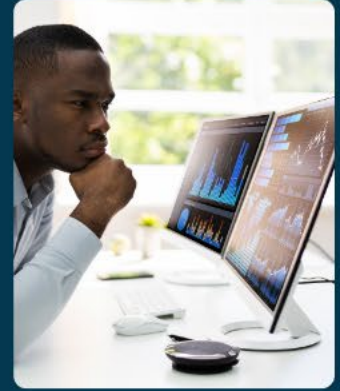




# ABPM Continuing Certification Program (CCP) Requirements





# Continuing Certification Program (CCP): Three-Phase Plan

# Three-Phase Implementation of CCP



We are here

## Phase 1

January 1, 2023, to  
December 31, 2024

## Phase 2

January 1, 2025, to  
December 31, 2029

## Phase 3

January 1, 2030, to  
December 31, 2039

# Phase 2: January 1, 2025, to December 31, 2029



Continuing Certification Program (CCP)	January 1, 2023 - December 31, 2024	January 1, 2025 - December 31, 2029	January 1, 2030 - December 31, 2039
<b>Professionalism &amp; Licensure</b> Maintain a full, valid, and unrestricted license to practice medicine.	✓	✓	✓
<b>Annual Fee</b> Pay the annual fee	✓	✓	✓
<b>Lifelong Professional Development</b> 20 AMA PRA Category 1 Credits annually 6 credits must be certificate-specific	✓	✓	✓
<b>Longitudinal Assessment Program (LAP)</b> Answer 30 LAP questions annually	Not Required	✓	✓
<b>Improving Health &amp; Health Care (IHHC)*</b> Complete an activity designed to improve a Diplomate's practice	Not Required	Not Required	✓

\*Subject to final approval by ABMS' Continuing Certification Committee

# LAP Requirements



- 30 multiple-choice questions
- Open resource / open book
- 60 minutes per question
- Participation Standard Only (MPS set to 25%)
- Diplomates have full calendar year to complete 30 questions
- Each year, ABPM will share the areas of content outline that will be covered in that year's assessment



# Questions?

Contact ABPM staff at [abpm@theabpm.org](mailto:abpm@theabpm.org)  
[www.theabpm.org](http://www.theabpm.org)